

# Tundra



Please Note: Information is accurate as at May 2026.

Specification and imagery are indicative and should only be used as a guide. Vehicle and accessory specification, features, colour and trim may differ at the time of vehicle delivery.



# OH WHAT A FEELING

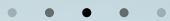
You'll feel it with every drive. In every twist and every turn. It's our unwavering commitment to move you, not only today, but well into tomorrow as we relentlessly reimagine the future of mobility.

With our eyes on the horizon, we're committed to creating a future where all of humankind is empowered with the freedom to move.

03 Introduction  
04 Platinum Design  
05 Interior Design  
09 Limited  
12 Performance  
13 Towing

15 Toyota Safety Sense  
16 Limited Features  
17 Platinum Features  
18 Colours and Trim  
19 Accessories  
21 Unlock It All

# Ready, set, Tundra.



The Toyota Tundra is the ultimate expression of power, flexibility and luxury – a full-size pick-up that's as strong as it is sophisticated.

As the most powerful Toyota ever sold in Australia, the Tundra's show-stopping presence is matched by the effortless confidence it inspires behind the wheel. Combining supreme comfort, space and quality with an expansive view of the world, Tundra is all about hitting the road in the most enjoyable way possible.

It's exciting to look at and even more exciting to drive, and is underpinned by the robustness that Toyota is renowned for. To re-engineer for right-hand drive and build the Tundra to Toyota's exacting standards, we have partnered with Walkinshaw Automotive Group – a global leader in the design, engineering, development and small-scale manufacture of performance vehicles.



# The pinnacle of Platinum



The Platinum grade elevates the sophistication of the Toyota Tundra to a truly premium level. From its plated mesh-style front grille to its unique 20" black alloy wheels and bold two-tone, black-accented power tailgate with remote release, the Platinum combines first-class splendour with athletic muscularity.

Open the doors and you're greeted with high-quality leather accented upholstery on the seat facings and the heated steering-wheel rim with telescopic power adjustment. Platinum's luxurious front seats feature a built-in massage system as well as heating and ventilation, 4-way power lumbar support and 10-way

power adjustment for the passenger. Outboard rear seating positions also enjoy heating and ventilation.

A large panoramic glass sunroof offers one of the widest openings of any full-size pick-up in Tundra's class, while a 10.9" driver's colour Head-Up Display conveys everything from digital speed to safety warnings, gearshift position and drive-mode selection.

Comfort and convenience are enhanced by rain-sensing wipers and new LED tub lamps.



# Embrace the wide open space

Inside Tundra, you'll find yourself in a generously spaced cabin surrounded by the latest technology.

The 14" colour touchscreen display features wired Android Auto™,<sup>2</sup> and wireless Apple CarPlay.<sup>2</sup> You are supported by the 12-speaker premium JBL®<sup>3</sup> audio system plus other functions accessible through Apple CarPlay<sup>2</sup> and Android Auto™,<sup>2</sup> only.

When on the move, the 12.3" Multi Information Display (MID) delivers essential performance data and travel information that can be quickly configured to suit your needs.

The seats are supportively contoured, providing both durability and comfort for long or short trips, on or off the road.

In Tundra Platinum, a Tundra exclusive seat-massage system with 25 different settings can refresh the driver and front passenger on a long drive, helping to reduce fatigue.

# Tundra Platinum



Tundra Platinum in Feverish Red<sup>1</sup> shown. Pre-production vehicle shown. Final range and specifications may differ from those depicted.



Tundra Platinum in Feverish Red<sup>1</sup> shown. Pre-production vehicle shown. Final range and specifications may differ from those depicted.



A Leather accented seats with driver and front passenger massage seats

B Plated mesh style front grille

C Panoramic roof

D Rear window curtains

E Chrome interior trim

F Power tailgate with remove release

# Tundra Limited



Tundra Limited in Saturn Blue<sup>1</sup> shown. 2024 production model shown. May 2024 Limited production models onwards may have updated specifications.

# Tundra Limited



Tundra Limited in Saturn Blue<sup>1</sup> shown. 2024 production model shown.  
May 2024 Limited production models onwards may have updated specifications.





A



B



C



E



D



F



G

A 12.3" Multi Information Display

B Digital rear-view mirror

C Power vertical rear window

D Dual-zone climate control

E 10-speed automatic transmission

F Part-time 4-Wheel Drive, electronic 2-speed transfer case

G Wireless charger

# The power and the glory

Tundra drives on-road presence and performance to new levels, drawing attention and turning heads wherever it goes.

The Tundra's 3.5L V6 twin-turbo engine with 1-Motor Hybrid produces 326kW of power and 790Nm of torque, all harnessed by a 10-speed automatic transmission for smooth acceleration and rock solid performance on the road. A 1-Motor Hybrid is a powertrain technology where an additional electric motor, which typically serves to improve the power and performance of a vehicle, works in conjunction with the internal combustion engine.

The box section chassis delivers impressive body rigidity with reduced weight and is supported by multi-link rear suspension for improved ride and towing stability.<sup>4,5</sup>

Everything about Tundra is designed and built to exceed your everyday expectations.

Tundra Limited in Saturn Blue<sup>1</sup> shown. 2024 production model shown. May 2024 Limited production models onwards may have updated specifications.



Check vehicle's Owner's Manual before attaching loads. 2024 production model shown. May 2024 Limited production models onwards may have updated specifications.<sup>4,5</sup>



When it comes to shouldering a heavy load, the Tundra can get the job done, offering a maximum braked towing capacity of 4.5 tonnes.<sup>4</sup>

Tundra comes fitted with a 3.5 tonne integrated Towing Kit as standard and you have the option to purchase a 4.5 tonne Towing Kit or Load Distribution Hitch<sup>5</sup> for your towing needs.<sup>6</sup> When towing loads above 2.2 tonne, Toyota recommends the use of a Load Distribution Hitch<sup>5</sup> to get the most out of your towing experience.<sup>6</sup>

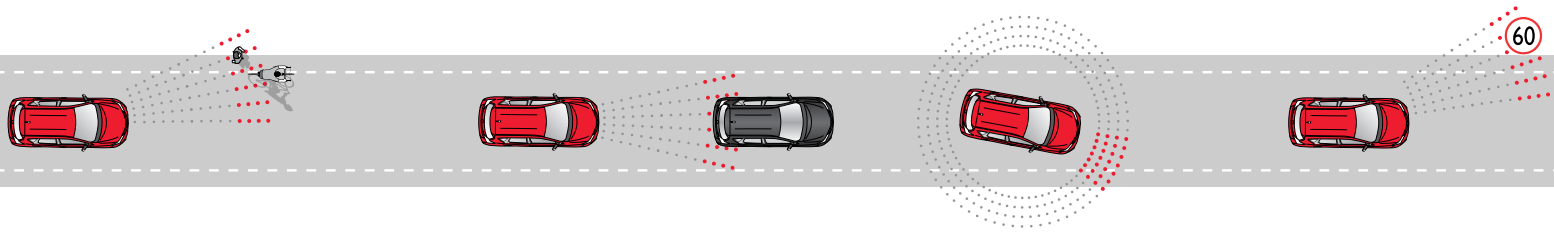
When towing, you'll also have the added on-road confidence that comes from a Towing Brake Controller and Trailer Back-up Guide, each sold separately.

# Toyota Safety Sense

Toyota  
Safety  
Sense

At Toyota, we believe it's simply not enough to say "safety comes first" – we prove it. That's why, in our ongoing pursuit of creating ever safer cars, now and into the future, we developed Toyota Safety Sense<sup>7</sup> (TSS). A suite of active safety features designed to help protect us all through helping to support safe driving.

Tundra features TSS driver assistance technologies, aiming to recognise and help avoid certain hazards and collisions, giving you and your passengers greater peace of mind wherever you're headed. Please visit [toyota.com.au](http://toyota.com.au) for vehicle and specification information.



## Pre-Collision Safety system with pedestrian and daytime cyclist detection

Pre-Collision Safety<sup>7</sup> (PCS) system with pedestrian and daytime cyclist detection is a multi-stage warning system. Using an integrated camera and radar to help detect other vehicles in front of you, the PCS system is designed to assist the driver where there is a likelihood of frontal collision with cars and pedestrians during day or night, or cyclists during the daytime. The PCS system includes a visible and audible alert of possible collisions, additional braking force to assist when you're braking, and if a collision appears to be unavoidable automatic braking to help mitigate impact.

## Active Cruise Control (high speed)

Active Cruise Control<sup>7</sup> is designed to help keep a constant distance between vehicles. It uses a millimeter wave radar to monitor the gap between your vehicle and the one in front, automatically accelerating or slowing down when needed to help you maintain a set distance.

## Lane Departure Alert with Steering Assist

Lane Departure Alert<sup>7</sup> with steering assist is designed to help prevent vehicles drifting from their lane by monitoring road markings, and providing a visible and audible alert should it detect any deviation from the lane. It may also apply additional steering force if needed to help you stay in your lane.

# Tundra Limited



Pre-production model shown. Final range and specifications may differ from those depicted.

- 3.5L V6 twin-turbo with 1-Motor Hybrid<sup>8</sup>
- 10-speed automatic transmission
- Part-time 4-Wheel Drive, electronic 2-speed transfer case
- Automatic limited-slip differential
- 20" alloy wheels with Bridgestone<sup>3</sup> tyres
- LED headlamps with manual levelling
- 122L fuel tank
- Heated power side mirrors
- Active grille shutter and front spoiler
- Crushed tube side steps
- Front and rear mudguards
- Smart entry and start system
- 8-way power-adjustable heated and ventilated driver and front passenger seats
- Leather accented seats
- Premium steering wheel with phone, audio, MID, and driver assist controls
- 14" colour touchscreen display
- 12.3" colour Multi-Information Display
- Wireless Apple CarPlay<sup>®2</sup> and wired Android Auto<sup>™,2</sup>
- 12-speaker JBL<sup>®3</sup> premium audio
- Digital rear-view mirror
- Front and rear parking sensors
- Panoramic View Monitor
- Immobiliser and alarm
- Electronic parking brake
- Power sliding rear window
- Front dual-zone automatic climate control
- Power tailgate with remote release
- Rear cargo camera
- Wireless charger
- Tyre pressure monitoring system
- Toyota Safety Sense<sup>7</sup> – including Active Cruise Control, Lane Trace Assist, Lane Departure Alert, Pre-Collision Safety system with pedestrian and daytime cyclist detection, Automatic High Beam
- 8x airbags
- Rear Cross Traffic Alert<sup>7</sup>
- Blind Spot Monitor<sup>7</sup>
- Trailer wiring harness with 12-pin connector
- Trailer brake controller
- Trailer back-up guide

# Tundra Platinum



Pre-production model shown. Final range and specifications may differ from those depicted.

## In addition to, or in replacement of, Limited features:

- Black alloy wheels
- Plated mesh style front grille
- Premium leather accented seats
- Power tilt and telescopic steering column with memory
- Rear door window pull-up sunshades
- 10-way passenger power seat
- 4-way driver and passenger power lumbar support
- Front massage seats
- 2x heated and ventilated rear seats
- Heated steering wheel
- Panoramic roof
- Rain sensing wipers
- 10.9" colour Head-Up Display
- LED tub lamps

# Big bold colours

Tundra makes a statement wherever it goes, with a range of colours made for adventure that look ready for action in town or in the outdoors.



○ Glacier White 040



○ Frosted White<sup>1</sup> 089



● Silver Storm<sup>1</sup> 1J9



● Graphite<sup>1</sup> 1G3



● Eclipse Black 218



● Feverish Red<sup>1</sup> 3U5



● Jungle Khaki<sup>1</sup> 6X3



● Saturn Blue<sup>1</sup> 8X8

## COLOUR AND TRIM GUIDE

Grade	Interior Seat Trim	Glacier White	Frosted White <sup>1</sup>	Silver Storm <sup>1</sup>	Graphite <sup>1</sup>	Eclipse Black	Feverish Red <sup>1</sup>	Jungle Khaki <sup>1</sup>	Saturn Blue <sup>1</sup>
Limited	Leather accented interior (LD21)	•	•	•	•	•	•	•	•
Platinum	Premium leather accented (LA21)		•	•	•	•	•	•	•

# Accessories to personalise your Tundra



Toyota Genuine Accessories<sup>6</sup> can elevate your Tundra's capabilities even further. All accessories have been designed, developed and tested to meet the rigours of Australian conditions and comply with all applicable safety regulations, as well as being covered by a Toyota Warranty Advantage.<sup>9</sup>

To best support Tundra's maximum towing capability,<sup>4,5</sup> vehicles come with a standard 3.5 tonne tow ball and tongue. Toyota Genuine Accessories offer a specific 4.5 tonne tow ball and tongue, each sold separately.

Owners wanting to keep their Tundra looking pristine even during heavy use could accessorise with Door Edge Guards, Door Handle Protection Film and All Weather Floor Mats. Enhancing Tundra's utility is made possible with a sleek Tri-fold Tonneau Cover, Cargo Net, Swing Out Bed Storage and even a Camera Mount.

To make your Tundra do more and go further you also have the option of adding these other Toyota Genuine Accessories:<sup>6</sup>

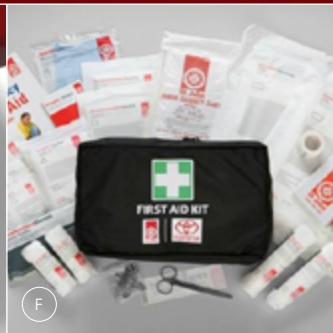
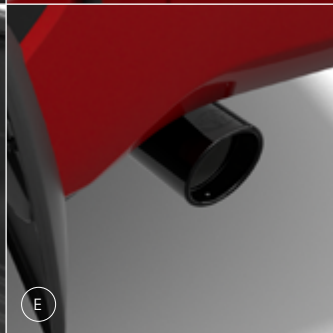
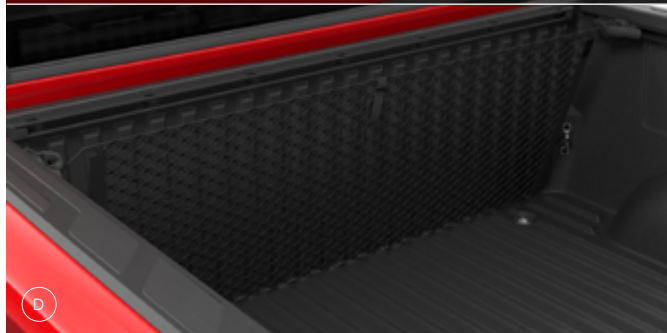
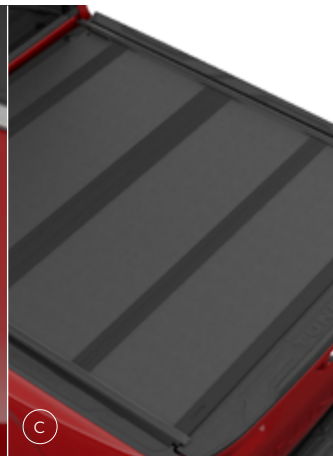
- Tailgate Insert Badge
- Emblem Overlays
- Dash Cam
- Mini Tie Down with Hook
- Exhaust Tips
- First Aid Kit

A All-weather Floor Mats – front shown

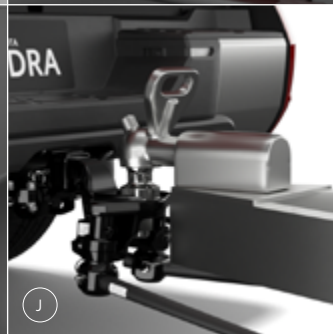
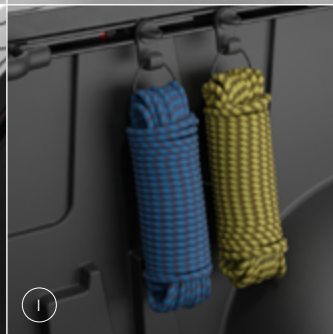
B Swing Out Bed Storage – sold separately

C 4.5T Tongue and Tow Ball – 3.5T tongue and tow ball is supplied as standard with vehicle





- A Black Tailgate Insert Badge – also available in chrome
- B Black Emblem Overlay – shown on Limited grade
- C Tri-fold Tonneau
- D Cargo Net
- E Black Exhaust Tips – also available in chrome
- F First Aid Kit
- G Door Edge Guard – available in black only
- H Camera Mount – camera not included
- I Mini Tie Down with Hook – contents not included
- J Load Distribution Hitch<sup>4</sup> – available in 3.5 and 4.5 tonne. Sold separately

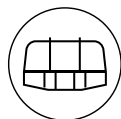


# Unlock it all



When you join the Toyota family, you get so much more than a new car feeling. You unlock a whole range of benefits to keep you moving now and well into the future.

Discover your Toyota lifetime of advantages at [toyota.com.au/owners](https://toyota.com.au/owners)



## Toyota Genuine Accessories<sup>6</sup>

Developed alongside the vehicle, this unique advantage allows Toyota to design accessories, so they integrate harmoniously with the vehicle structure and safety systems. For more information, visit [toyota.com.au/accessories](https://toyota.com.au/accessories)



## Toyota Service Advantage<sup>10</sup>

We'll keep the cost of your standard logbook service at a capped price for up to your first 3 or 5 years on the road, depending on the vehicle model. To find out your low capped service price, visit [toyota.com.au/owners/service/service-pricing-calculator](https://toyota.com.au/owners/service/service-pricing-calculator)



## Toyota Genuine Insurance<sup>11</sup>

Designed by the people who know your Toyota best. Our policies are here to help you get back on the road with the certainty of Toyota Genuine Parts and a range of cover to suit you. For more information, visit [toyotainsurance.com.au](https://toyotainsurance.com.au)



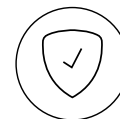
## Toyota Access

Offering flexible finance options, lower monthly repayments<sup>12</sup> and a Guaranteed Future Value,<sup>13</sup> a Toyota Access Loan means you can drive the Toyota you want today, knowing the future is taken care of. When your loan ends, you have options to trade, keep or return your vehicle. For more information, visit [toyota.com.au/toyota-access](https://toyota.com.au/toyota-access)



## Toyota Certified Pre-Owned Vehicles

Enjoy the reassurance that comes with a Toyota Certified Pre-Owned Vehicle. Including an additional 1-year Toyota-backed warranty,<sup>14</sup> full-service history and 90-point inspection by Toyota Technicians. For more information, visit [toyota.com.au/certified](https://toyota.com.au/certified)



## Toyota Warranty Advantage<sup>15</sup>

Stick to your service schedule, and we'll extend your engine and driveline warranty from five to seven years, so you can drive stress-free for longer. For more information, visit [toyota.com.au/owners/warranty](https://toyota.com.au/owners/warranty)

# Disclaimers and Notice

- 1 Paint featured is an optional extra at additional cost.
- 2 CarPlay® and Siri® are trademark of Apple, Inc. registered in the U.S. and other countries. Android Auto™ is a trademark of Google LLC. Requires compatible device, USB connection or Bluetooth® connection for vehicles fitted with wireless CarPlay® and/or Android Auto,™ mobile data, network reception and GPS signal. Mobile usage at user's cost. Apps subject to change. For details, see [toyota.com.au/services/connected](https://toyota.com.au/services/connected)
- 3 Product and company names are trademarks of their respective owners.
- 4 Maximum vehicle braked towing capacity is subject to state and federal regulatory requirements. Before towing, customers should consider the vehicle's limitations, including towing capacity specifications, gross vehicle mass (GVM), gross combined mass (GCM), kerb weight specified by the manufacturer, and ensure that individual front and rear axle load limits are not exceeded as also specified by the manufacturer. Vehicle payload calculation is GVM less kerb weight or as otherwise specified in the vehicle owner's manual. Actual payload is affected by any added load to the vehicle, including the number of occupants, luggage, accessories, and tow ball download weight. It is important to consider the actual payload, to ensure the fully loaded vehicle remains within the specified GVM limits. For more details, please refer to the vehicle's Owner's Manual/[Toyota Basic Towing Guide](#) or consult your authorised dealer
- 5 Toyota recommends use of a Load Distribution Hitch (LDH) when towing loads greater than 2.2T as specified in the Owner's Manual. Based on road conditions, an LDH may not be suitable. Refer to [Toyota Basic Towing Guide](#). Toyota Genuine LDH sold separately at additional cost. Warranty conditions apply. Refer to [Toyota Warranty Advantage](#).
- 6 See your Toyota dealer to confirm Toyota Genuine Accessories suitable for your vehicle prior to ordering, as specifications, applicability, availability and fitment requirements may change over time. Consider combined mass of load and accessories to ensure gross vehicle mass limits are not exceeded. Refer to [toyota.com.au/vehiclepayload](https://toyota.com.au/vehiclepayload) for information. Fitment of certain accessories may require recalibration, relocation or removal of standard equipment (which may be retained by Toyota and may require the purchase of add-ons such as installation kits).
- 7 Driver assist feature. Only operates under certain conditions. Check your Owner's Manual for explanation of limitations. Please drive safely.
- 8 A 1-Motor Hybrid is a powertrain technology where an additional electric motor, which typically serves to improve the power and performance of a vehicle, works in conjunction with the internal combustion engine.
- 9 Toyota Genuine Parts/Accessories purchased at and fitted to a Toyota vehicle by a Toyota dealer are warranted for the remainder of that vehicle's Toyota Warranty Advantage period, or 2 years from installation (whichever is greater). Genuine Parts/Accessories purchased from, but not fitted by, a Toyota dealer are warranted for 2 years from date of purchase. See [toyota.com.au](https://toyota.com.au) for T&Cs. This warranty does not limit and may not necessarily exceed your rights under the Australian Consumer Law.
- 10 Applies to standard scheduled logbook servicing (normal operating conditions) for 5 yrs/100,000kms (whichever occurs first) up to a max. 10 services. Excludes Government and Rental vehicles. For details see your Toyota dealer or visit [toyota.com.au/services/car-insurance](https://toyota.com.au/services/car-insurance)
- 11 Terms and conditions apply. This advice is general in nature and does not take into account your objectives, financial situation or needs. Before making a decision to purchase any of the insurance products you should consider the appropriateness of the advice taking into account your own objectives, financial situation and needs and refer to the current PDS and Target Market Determination for the relevant product available from participating Dealers, via our website at [toyota.com.au/services/car-insurance](https://toyota.com.au/services/car-insurance) or by calling 137 200. Toyota Comprehensive Motor Vehicle Insurance purchased in a dealership or via the Toyota Insurance National Customer Solutions Centre is facilitated by Toyota Finance Australia Limited ABN 48 002 435 181, AFSL and Australian Credit Licence 392536 as agent for, and on behalf of, the insurer. The insurer of Toyota Comprehensive Motor Vehicle Insurance is Aioi Nissay Dowa Insurance Company Australia Pty Ltd ABN 11 132 524 282, AFSL 443540 (Adica). If Toyota Comprehensive Motor Vehicle Insurance is purchased online, the issuer and insurer is Adica.
- 12 Lower monthly repayments compared to a similar term with no Guaranteed Future Value (GFV) or equivalent balloon final payment. Total interest charges will be higher if a GFV or balloon final payment is selected.
- 13 Guaranteed Future Value (GFV) is the minimum value of your new or approved demonstrator Toyota at the end of your finance contract, as determined by Toyota Finance subject to fair wear and tear and agreed kilometres being met. Ask your dealers for more information. Approved applicants only. T&Cs apply. Toyota Finance Australia Limited ABN 48 002 435 181, AFSL and Australian Credit Licence 392536.
- 14 Applicable to pre-owned vehicles purchased as a Toyota Certified Pre-Owned (TCPO) vehicle on or after 01/01/2022. TCPO 2022 Warranty expires 1 year after sale, or 1 year after the current New Vehicle Warranty expires (if applicable), or 10 years from date of registration in original owner's name, or at 160,000kms (whichever occurs first). TCPO Warranty does not apply to vehicles used for commercial purpose (eg taxis or rideshare). See [toyota.com.au/owners/warranty](https://toyota.com.au/owners/warranty) for details. This warranty does not limit and may not necessarily exceed your rights under the Australian Consumer Law.
- 15 The Toyota Warranty Advantage Extended Engine and Driveline coverage is for 7 years from delivery, provided your vehicle is properly serviced and maintained per its Warranty and Service Book. Excludes vehicles used for a commercial purpose, such as taxis, hire vehicles and vehicles transporting people or goods for payment including rideshare. See [toyota.com.au/owners/warranty](https://toyota.com.au/owners/warranty) for details. This warranty does not limit and may not necessarily exceed your rights under the Australian Consumer Law.

## IMPORTANT NOTICE – PLEASE READ:

Toyota Australia uses its best endeavours to ensure material is accurate at the time of publishing. All information must be confirmed with your Toyota Dealer at the time of ordering, as specifications, applicability and availability may change over time. Colours depicted are a guide only and may vary from actual colours due to the printing/display process. Toyota Australia reserves the right to change and/or discontinue, without notice, models, prices, colours, materials, equipment, specifications. To the extent permitted by law, Toyota Australia will not be liable for any damage or loss

incurred from relying on the information and images contained in this material. Distributed nationally (other than in Western Australia) by Toyota Motor Corporation Australia Limited ABN 64 009 686 097. Material distributed in Western Australia by or on behalf of Prestige Motors Pty Ltd (for vehicles) and by Eastpoint Pty Ltd (for parts/accessories). Toyota Australia makes no warranties regarding (and will not be liable for) accuracy of materials distributed in Western Australia. PROOF HQ: T2026-023052. GTO-009467-03. VERSION: MAY 2026.